

# LOVE TO SHINE

PORTFOLIO BY LTS

JUNI 2019

[LTS-LIGHT.COM](http://LTS-LIGHT.COM)



LTS  
LOVE TO SHINE

# REFERENZEN

## RETAIL



LTS  
LOVE TO SHINE

JAGUAR  
LANDROVER  
CLASSIC CARS  
ESSEN





PBH 5

RANGE ROVER

- CLASSIC -



"He created the concept for a go-anywhere do-anything vehicle"

GHR 124

CLASSIC



# WOLFORD AMSTERDAM





76

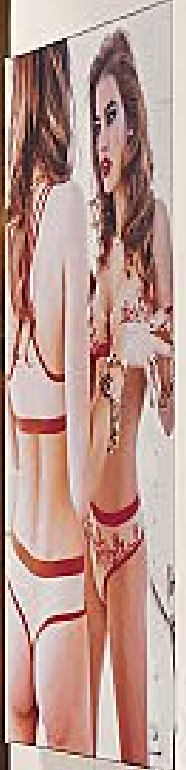
[Wolford]



Prom



[Wolford]





# WOLFORD BREGENZ





Wolford



A modern kitchen with a central island, stainless steel appliances, and large arched windows. The kitchen features a central island with a stainless steel countertop and a large stainless steel range hood. The island is supported by thin metal legs. The main kitchen counter is also stainless steel and has a sink, a stove, and a large stainless steel range hood. The cabinets are stainless steel. The floor is made of light-colored wood. The walls are white with large arched windows. The ceiling has recessed lighting. A red graphic element is on the left side of the image.

**BULTHAUP  
HAMBURG**





# JACQUES' WEIN-DEPOT AACHEN

*Die Erfahrung öffnet die  
Tür für das Besondere.  
Probieren Sie es einfach!*









DEUTSCHLAND

...ider die Letzten!

AQUARELLE  
PIRRAMIMMA  
VANITA GRILLO  
VILVALLI  
500 MANI  
GRAN MARIUS

7,20 €  
7,95 €  
7,95 €  
PUGIBET  
GRAN MARIUS

WINTER  
WINTER  
Schenlaub

# TAFELZIER PATISSERIE NÜRNBERG





**TAFELZIER**

Pâtisserie



# GABOR MINDELHEIM





Gabor

7  
40,5

Gabor

Gabor

6  
39

Gabor

5  
38

Gabor

6  
39



PLANA  
KÜCHENLAND  
PFORZHEIM









# BENTLEY LONDON



BENTLEY





MARC CAIN  
DEUTSCHLAND





MARCCAIN

MARCCAIN







# REFERENZEN

## OFFICE



LTS  
LOVE TO SHINE

SAE  
INSTITUTE  
BERLIN









SPD  
INSTITUTE  
BERLIN  
COURTYARD

- AUDIO
- MUSIC BUSINESS
- GAMES
- ANIMATION
- FILM
- WEB
- CROSS MEDIA

# BURNICKL INGENIEURE VELBURG







① min 0,5m  
② max 1,0m



Handwritten notes and diagrams on a chalkboard.



MEDIENTECHNIK





# ZURICH BRISBANE





  
ZURICH

RE DOOR  
DO NOT KEEP OPEN



  
**ZURICH**



# GREINER PLEIDELSHEIM







# LEO PHARMA DUBAI









# HILDA GYMNASIUM PFORZHEIM







Tribünen  
G-L

Tribünen  
A-F

# FEUERWEHR LUSTENAU



««« Feuerwehrjugend

Schulung >>>



MAGIRUS

FEUERWEHR  
LUSTENAU

FEUERWEHR

DO 284 DY

FEUERWEHR

MAN

DO 458 CO

4

Feuerwehr Lustenau  
122



The image shows a modern interior space, likely a gymnasium or sports hall, with a prominent red wall on the right side. A balcony with a glass railing is visible in the foreground. The ceiling is made of concrete with several long, recessed linear light fixtures. Large windows in the background offer a view of the outdoors. A pink graphic element is on the left side of the image.

# TURNSTAAL STIFT SEITENSTETTEN







ORANGE  
BUSINESS  
MOSKAU





**Business  
Services**

**Hello**





# REFERENZEN

# HOSPITALITY



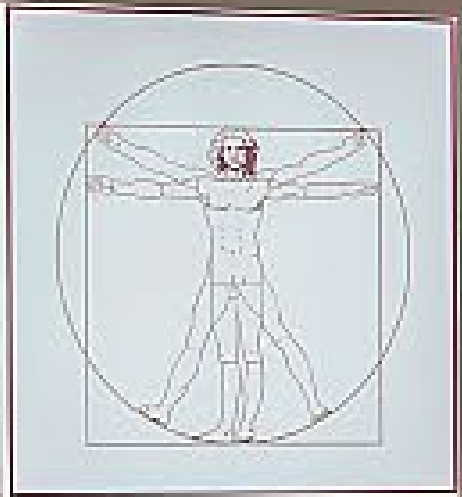
LTS  
LOVE TO SHINE

# LEONARDO ROYAL HOTEL ULM









Leonardo  
Royal Hotels

OFFICE

# HYPERION MÜNCHEN







05

517-520  
511-516

# DIE WÄLDERIN MELLAU







# VIELEN DANK!

ALLE INHALTE DIESER PRÄSENTATION SIND GEISTIGES EIGENTUM DER LTS LICHT & LEUCHTEN GMBH. SIE DÜRFEN OHNE UNSERE ZUSTIMMUNG WEDER KOPIERT NOCH AUSZUGSWEISE FÜR EIGENE ZWECKE VERWENDET WERDEN.

JUNI 2019

LTS-LIGHT.COM



LTS  
LOVE TO SHINE